

# IM series

Sealed snap-action pushbutton switches •  
bushing Ø 12 mm • momentary



## DISTINCTIVE FEATURES

- Snap-action : tactile feedback with audible click
- High current/voltage rating
- Sealed to IP67
- Flat round actuator for optional marking
- NO+NC



## ENVIRONMENTAL SPECIFICATIONS

- Front panel sealing : IP67 according to IEC 60529
- Shock resistance : 50 g - 11 ms according to IEC 68-2-27
- Salt spray : IEC 512-6, test 11f
- Operating temperature : -40 °C to +85 °C (-40 °F to +185 °F)
- Storage temperature : -40 °C to +85 °C (-40 °F to +185 °F)



## ELECTRICAL SPECIFICATIONS

- Max. current/voltage rating with resistive load : 3 A 28 VDC
- Initial contact resistance : 100 mΩ max.
- Insulation resistance : 1 GΩ min. at 500 VDC
- Dielectric strength : 500 Vrms between terminals
- Electrical life at full load : 25,000 cycles



## GENERAL SPECIFICATIONS

- Panel thickness : 1.5 mm (.059) to 10 mm (.394)
- Total travel : 1.7 mm (.067) ± 0.3 mm
- Low level or mechanical life : 1,000,000 cycles
- Torque (applied to nut) : 1.2 Nm max. with metal nut U166  
0.9 Nm max. with plastic nut U4248



## MATERIALS

- Case : polyamide 4/6
- Actuator : polyamide 6/6
- Bushing/bezel : polyamide 6/6
- Contacts : silver, gold plated
- Terminal seal : epoxy

The company reserves the right to change specifications without notice.



# IM series

Sealed snap-action pushbutton switches •  
bushing Ø 12 mm • momentary

## AGENCY APPROVAL



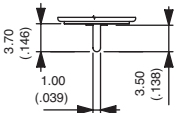
1 A 125 VAC/250 VAC  
File E83438

**Availability:** consult factory for details of approved models.

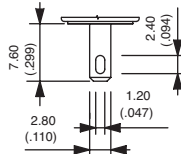
**Marking:** to order switches marked UL, complete appropriate box of ordering format.



## TERMINALS



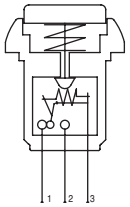
Straight P



Quick-connect Z



## ELECTRICAL FUNCTIONS

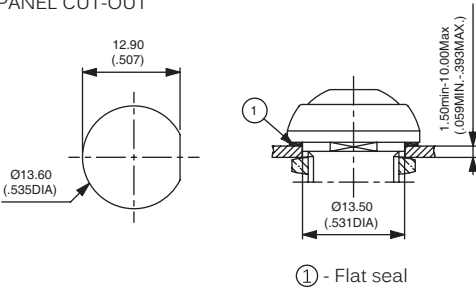


Function 7 (NC+NO)

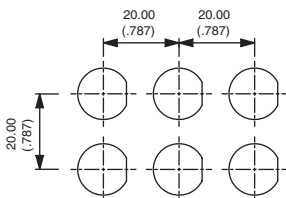


## MOUNTING STANDARD BEZEL

### PANEL CUT-OUT

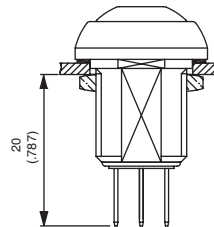


### MATRIX MOUNTING



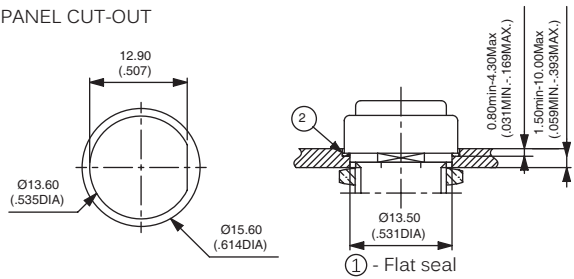
## MOUNTING STANDARD BEZEL (CONTINUED)

### BACK OF PANEL SPACE REQUIREMENT

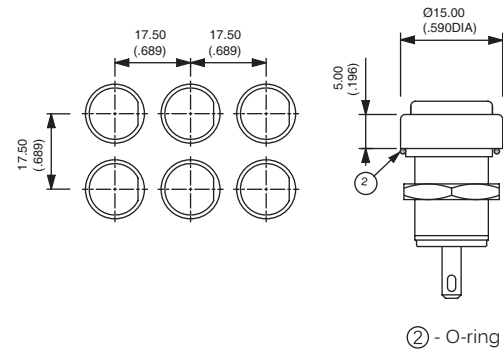


## MOUNTING REDUCED BEZEL

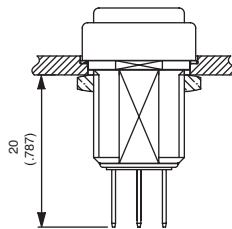
### PANEL CUT-OUT



### MATRIX MOUNTING



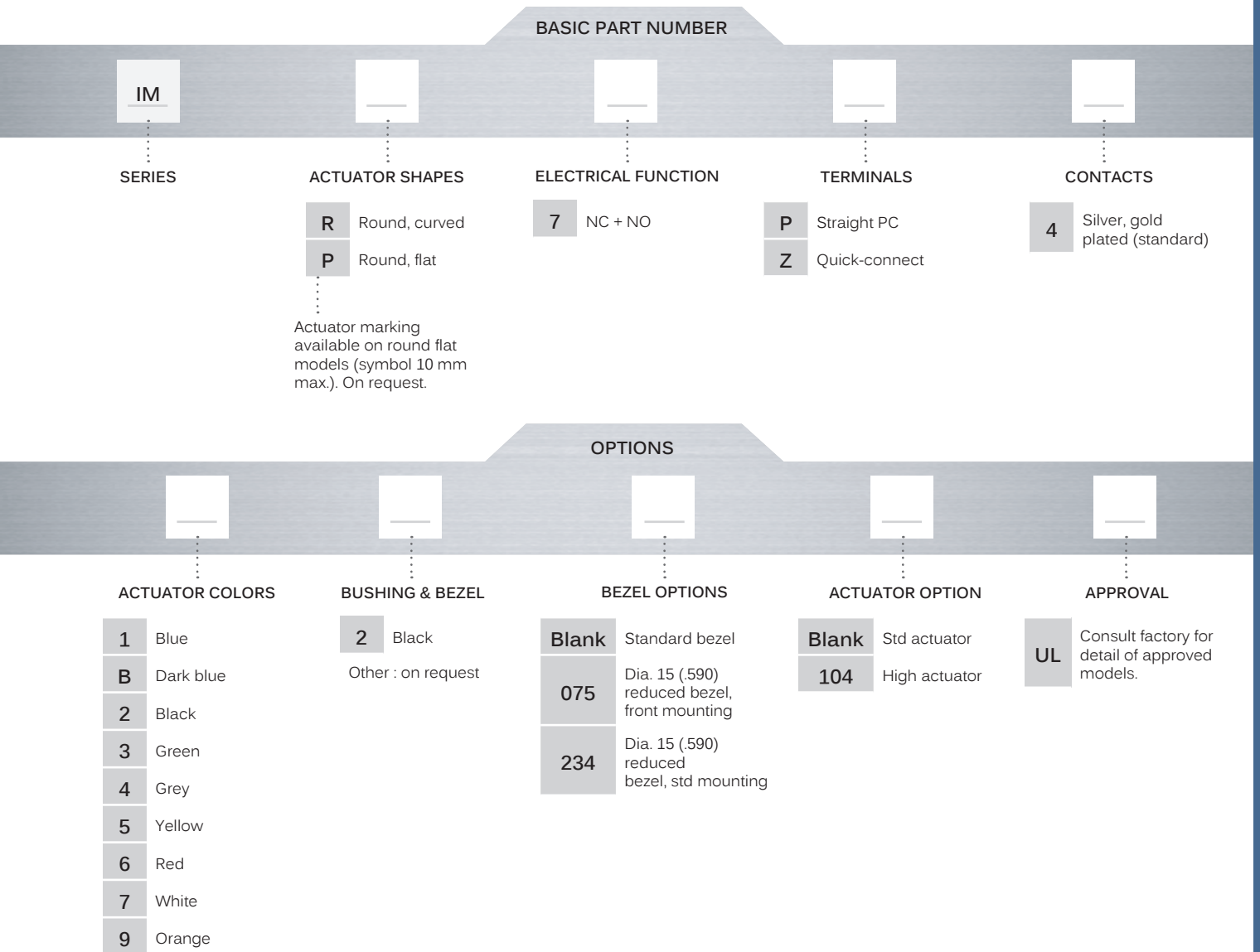
### BACK OF PANEL SPACE REQUIREMENT



Sealed snap-action pushbutton switches •  
bushing Ø 12 mm • momentary



## BUILD YOUR PART NUMBER



## ABOUT THIS SERIES

On the following pages, you will find successively basic part numbers of switches and options in the same order as in above chart.

- ⚠ **Notice** : please note that not all combinations of above numbers are available. Refer to the following pages for further information.
- 🔒 **A sealing boot** is available to protect the switches against frost and sand (P/N U5125). See "Sealing Boots" section of website.
- 🔧 **Mounting accessories** : Standard hardware supplied : 1 flat seal (standard bezel) or 1 O-ring (reduced bezel) and 1 metal hex nut 14 mm (.551) across flats. Hex nut part number U166. Plastic nut 17 mm (.669) across flats, thickness 4 mm (.157) available on request. Part number U4248.

# IM series

Sealed snap-action pushbutton switches •  
bushing Ø 12 mm • momentary

## STANDARD BEZEL STRAIGHT PC TERMINALS



Curved actuator  
**IMR7P4** NC+NO

Flat actuator  
**IMP7P4** NC+NO

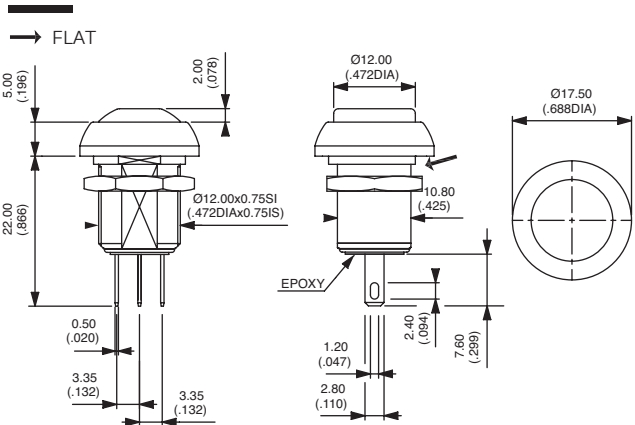
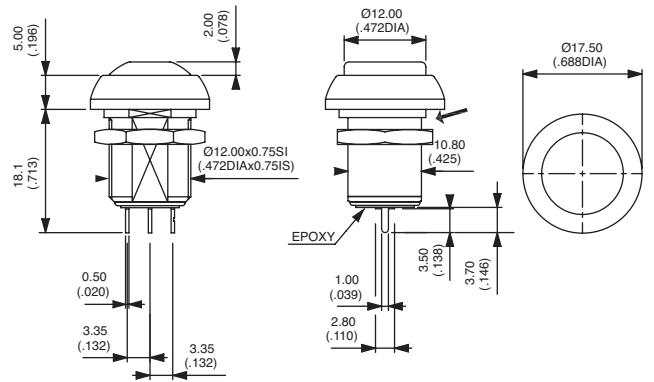
## STANDARD BEZEL QUICK-CONNECT TERMINALS



Curved actuator  
**IMR7Z4** NC+NO

Flat actuator  
**IMP7Z4** NC+NO

Common terminal identified by a horizontal dash  
→ FLAT



### ACTUATOR COLORS



- 1 Blue
- B Dark blue
- 2 Black
- 3 Green
- 4 Grey
- 5 Yellow
- 6 Red
- 7 White
- 9 Orange

### BUSHING AND BEZEL



- 2 Black (standard)
- Other : on request

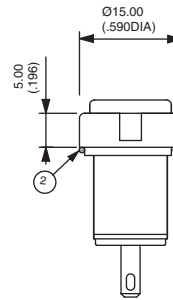
# IM series

Sealed snap-action pushbutton switches •  
bushing Ø 12 mm • momentary

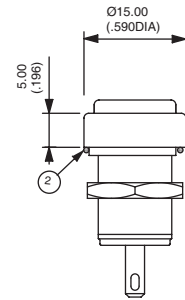
## BEZEL OPTIONS



- Blank** Standard bezel
- 075** Dia. 15 (.590) reduced bezel, mounting of the switch from the front into a threaded panel cut-out
- 234** Dia. 15 (.590) reduced bezel, standard mounting

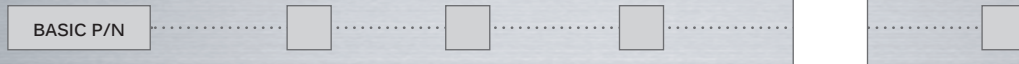


075

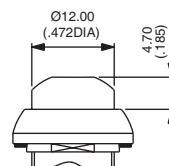


234

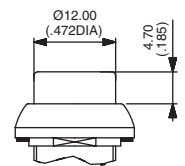
## ACTUATOR OPTION



- Blank** Standard actuator
- 104** High actuator

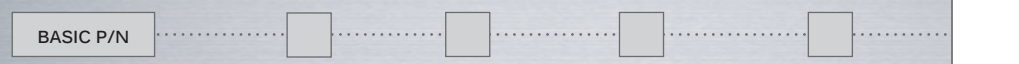


104 IMR



104 IMP

## AGENCY APPROVAL



- UL**
- Availability** : consult factory for details of approved models.
- Marking** : to order switches marked UL, complete appropriate box of ordering format.